



WELCOME TO THE GEORGIAN HOUSE

Coulscott House Visitor Information

Contents

Table of Contents

Contents	2
Contact Us	4
Departing from Coulscott	5
Feedback form	5
Breakages & Damage	5
Departure Time	5
Laundry	5
Hot Tub	5
Rubbish and recycling	5
Unwanted food	5
Keys	5
Early departure.....	5
Two Week Stays	5
Joining the Georgian House & Old Farmhouse	6
Swimming Pool	7
Animals	8
Dogs	10
Hot Tub	11
Food	12
Cottage Information	13
Towels	13
Bedding	13
Smoking.....	13
Heating & Hot Water	13
Television, DVD Player, Apple TV and Netflix	13
Instructions, Supplies & Maintenance.....	13
Mobile Phone Reception	13
Wood Burning Stoves	13
Keys	13
Laundry	14
Car Parking.....	14
Torch.....	14
Refuse & Recycling	15
Recycling	15
Composting	15
Rubbish	15
Leftover Food.....	15
Grounds & Gardens	16
Gardens & Fields	16
Children's Play Area.....	16
Outdoor Games.....	16
Playroom / Games Room	17
Wireless Broadband	18
Important Information	19
Oil	19
Electricity	19

Water	19
Fire	19
Security.....	19
Map of Cottages	20
Map of Grounds.....	21
Cottage Plan	22
Local Pubs & Restaurants	23
Local Shops.....	26
Local Services	27
Local Attractions	28
Places of Worship	30
Emergency & Medical Services	31
Fire Safety Emergency Plan	32

Any notices or additional information will be placed on the board in the laundry room, in the car port - please check this during your stay.

Information such as changes to animal feeding times will be placed here.

Contact Us

If you have problems, we would rather know!

Telephone: 01271 883339 - our main landline number

Voicemail: The same number has a service which, if we are out, emails us a transcript of any message wherever we are

Mobile: 07500 804 744

Email: stay@coulscott.co.uk

Website: www.coulscott.co.uk

In the event of an **emergency or serious problem**, and you cannot get hold of us, please see the notice board in the laundry room (in the courtyard) for details of who else you can call who will help.

Public Emergency service numbers are on Page 31

Departing from Coulscott

A quick check-list

Feedback form

Please do fill in the form we have left for you.

Breakages & Damage

We do not normally charge for minor damage but please tell us so that we can put things right.

Departure Time

Departure time is by 10am to enable our cleaners and maintenance staff to start work.

Laundry

It would be much appreciated if you would please strip beds of duvet covers, bottom sheets and pillowcases before leaving. Towels may be left in a separate pile in the bathroom. Please do not remove reusable/refillable items such as the toiletries.

Hot Tub

We need to start preparing the hot tub earlier than 10am so please do not use it on the morning of your departure.

Rubbish and recycling

Could you please put your sorted recycling in the containers and your bagged rubbish in the black wheelie bins, both of which can be found in the recycling center on the drive leading up to the courtyard, and your compost in the green wheelie bin by the entrance to Coulscott.

Unwanted food

Any leftover food, whole, fresh or still in unopened packets etc, please do not throw away. Leave it in your kitchen and we will do our best to see it goes to someone who can use it.

Keys

Please leave your keys on the kitchen table. There should be two house keys with green leather fobs and one pool key with a blue Perspex fob.

Early departure

Do please tell us if you plan to leave before your last day.

Please do not move furniture from its original position.

Please have a safe journey home.

Two Week Stays

For guests staying for two weeks, the house will be cleaned and your bedding and towels changed at the end of the first week. This is on a Friday usually between 10 am and 2 pm.

Joining the Georgian House & Old Farmhouse

For guests staying in the Georgian House and the Old Farmhouse together, please do not move any furniture (other than dining chairs) between the houses. Please replace, in to the correct house, any items including those from the kitchens that are moved between houses.

Swimming Pool

Safety is of paramount importance in enjoying our lovely swimming pool. We want you and your family to stay well.

Available for use - 9:00 am to 8:00 pm & Fridays 2:00 pm to 8:00 pm

Occasionally we may need to close it at other times - particularly to add chemicals.

The key for the Pool Hall is on a blue Perspex fob. Please take a minute to get to know how to work the lock.

SAFETY

Always lock the door when you leave and check that it is secure.

Always close the door even when you are in the Pool Hall. This is a vital safety rule to avoid small children wandering in and coming to harm.

The pool is unsupervised. There is a lifebuoy and a safety pole. There is a red button, which operates an alarm. This may or may not be heard. Please leave all these alone except in emergencies.

Depth - The pool slopes from about 1.00 to 1.15 meters.

Children - under fourteen, non swimmers and vulnerable adults must only be in the Pool Hall if accompanied and supervised by a responsible, competent, adult swimmer.

Please do not - run, jump or dive. Do not swim under the influence of alcohol etc. No glass should be brought into the Hall.

Please do - tidy pool toys etc off the floor when you have finished. Check any floatation aids etc to ensure they still work

Towels - The coloured towels are provided for use in the pool and hot tubs. Please do not use the white house towels.

Outdoor shoes must be left outside or on the mats inside. Our new soft porous surround flooring is damaged by mud and grit from shoes.

The Pool Cover is only left on overnight. If it is on when you come to use the pool, wind it carefully off, turning the near wheel clockwise. Leave the rigid end of the cover resting on the pool edge. **You never need replace the cover**

Leave alone please the pool cover roller, pool tools, controls, ornaments etc

Air Handling System The hall has a system to warm the air and dry it to keep condensation down. **Windows must not be opened** allowing colder air in.

Showering before using the pool helps maintain water quality.

Food and drink are not allowed in the Hall

Non-residents are not to use the pool.

Animals

The entrance to our animal enclosure is opposite the swimming pool.

We keep a wallaby, pigs, goats, chickens, ducks, peacocks, alpacas and guinea pigs.

If you would like to visit the animals, please come first with us so that we can show you what to do and what not to do. Unless we tell you otherwise, we have an animal feeding session every **Saturday at 10am** to which everyone is welcome. We have another session on Fridays at 9:30 just before guests leave. We will happily take you with us to feed the animals on other mornings. Just ask!

After you are familiar with the animals please visit them without us if you wish. Please observe a few simple **dos and don'ts**.

Children must always be accompanied by adults from their own party.

Always **close and secure all gates** behind you at once.

Do not feed any of the animals without asking our advice first.

Do not open the pig pen. Keep hands away from them - they have powerful jaws!

Be careful of the ponds. There is a lifebelt and rescue pole for emergencies.

Keep children close at all times but particularly around the goat and alpacas.

Do not enter the third enclosure which has animals not safe for you to mix with.

Disinfectant hand rub is on the gate as you leave. Wash hands afterwards as well.

We have to move our animals around sometimes but at the time of writing you will see them as follows

The guinea pigs live in a hutch inside a large cage to keep them safe. Do visit them and handle them but be careful not to drop or tread on them.

The chickens and ducks will be under your feet hoping to be fed. Don't be tempted. The chicken coop is on your left. Please don't open it.

The pigs, Disraeli and Gladstone live in a pen further down on the left.

The second enclosure gate is by the pond. Keep it locked or the goat will upend the feed bins!

The nicer alpacas are in here. Ozzie is the fawn coloured one and very good natured. If you crouch down and stay still he may rub noses. His younger brother Hugo, dark brown, is shyer. We sometimes have other alpacas in here. They can all be skittish and may suddenly run. Don't go behind them as they may kick. Don't stand downslope of them. They generally don't like to be touched, particularly on the head.

Violet-Elizabeth the little white goat is usually in here. She is very placid in nature and much loved.

The peacocks are locked up in their own cage at the far corner. This is due to their bad habits including screeching very loudly at night. Percy is the big male. He loses his tail every August and it regrows over winter. If you screech at him he may put it up for you! The two white ones are Penelope and Fluffy, mother and daughter.

The third enclosure has alpacas and goats you would not want to be with. So do stay out! You can look through the fence though. The big dark brown alpaca is Pyramus, the alpha male. He doesn't like men. He can be difficult. When in the mood he prances and spits. The white one is Thisbe, his mate, our only female. Nice-natured and long suffering, she is the mother of four of our animals.

You will also see two brown goats, William and Hubert, Violet's brothers. Nice but they butt.

Rare-breed sheep, usually Exmoor Horn, belonging to a neighbour, are usually in this area.

Our wallaby, Matilda, roams the first two enclosures. She is very shy of people although friends with the goats and alpacas. She likes bananas and carrots. She will hide from you and you will need to keep your eyes open to spot her.

Dogs

Dogs are only allowed by prior arrangement.

Dogs are to be kept on leads except in the houses or the large field. Please see the maps provided for the location of the dog field where dogs can be let off the lead - once through the gate.

They may not go upstairs (our stair gate must be in place at all times while a dog is staying).

Please ensure your dog does not disturb other guests.

Dogs are never to be left alone in any of the houses unless they are suitably crated and will not make a noise to disturb other guests.

We provide poo bags and a poo bin. Please do not leave the poo bags, full, around the site - always place them in the designated bin (which can be found in the recycling center).

They must never go in our animal enclosures, play areas, playroom or pool building.

They are allowed on the sofas as long as you use the throws provided and keep the dog from contact with the soft furnishings.

They must be clean inside the property and if you bring a muddy dog back from a walk, please clean them off using the outside hose and dog towel provided. Please do not use any towels provided for our human guests.

If you are part of a group booking, and your party has taken two or more cottages the dog/s must remain in the cottage that the dog/s were booked into. If they are going to enter the other cottages the dog fee per cottage must be paid.

You may see us with our dog around Coulscott - he has been brought up around the other animals and they know him.

We like dogs - we have one of our own - but for obvious reasons we can only have suitable and well behaved dogs at Coulscott.

Hot Tub

Consideration - Please:

Show consideration over noise - do not use the jets after 7pm and do not use tub at all after 9pm. Please do not play music outside.

Shower with soap and water before use. Use no oils etc. in the tub - the chemical balance is easily upset.

The tub cover is fragile, do not rest or sit on it. Please fold it back with care (using the mechanism). Replace cover at once after use.

Do not play with the controls (which may turn the temperature down).

Do not smoke in or near the tub.

Do not have too many in the tub so that it over-flows.

We cannot guarantee that the tub will always be in use particularly if these guidelines are not observed.

Safety Advice

The Chemical levels in a hot tub are much higher than in a swimming pool

Do not

Put your face under water

Jump, splash or swim

Bring glass items in or near the tub

Allow small children and babies in the tub

Allow any children in unsupervised

Go in the tub after using alcohol etc.

Allow children to use the tub as a swimming pool

Do not go in the tub without medical advice if you have any medical condition, are pregnant or are elderly.

Delicate skin may be affected by the chemicals in and heat of the water.

A maximum stay of 15 minutes in the tub is recommended.

Enter and exit slowly and with care.

Please report to us if the water is cloudy or discoloured.

Food

Handmade frozen food from COOK (<http://www.cookfood.net/>) is available in the freezer in the laundry room, which is situated on the side of the swimming pool.

Please help yourselves, indicate on the form in the laundry room what you have used and leave payment in the moneybox.

COOK make remarkable food for your freezer, prepared by hand at their Kitchen in Kent, using the same ingredients and techniques you would use at home.

Fresh eggs (£1.30) and apple juice drinks (£2.85) are also for sale in the laundry room (subject to availability).

Cottage Information

Towels

Towels are provided for guests' use. Please do not use our towels at the beach. The coloured towels are for use in the pool and hot tubs. Please keep the white towels for use inside.

Bedding

Waterproof mattress protectors are placed on the beds in the children's bedrooms (the single room and the small twin room). Please strip the bed at once in the event of an accident.

Smoking

Smoking is not ever permitted in any building. We discourage smoking anywhere on site. If you must smoke, please do so outside, away from the buildings. Please make sure the stub end is completely extinguished. Please don't leave it lying around

Heating & Hot Water

The central heating and hot water controls are in the walk-in wardrobe in the master bedroom to the left at the top of the stairs. There is a thermostat on the landing halfway up the stairs. We are keen to save energy so please turn off the heating when it is not needed and keep the individual radiators turned down or as low as possible.

Television, DVD Player, Apple TV and Netflix

The television has Sky Freeview. It is quite easy to use. The DVD player is very simple to operate. If you have difficulty in operating the TVs or DVD players please ask us and we will try to help. There is a DVD library located in the laundry room, in the courtyard. Please return the DVDs once you have finished with them. If you have any old DVDs we are grateful for additions. There is a separate remote for the Apple TV. There is a Netflix account for the Georgian House which can be found on the Apple TV- please do not sign out of this.

Instructions, Supplies & Maintenance

Instructions are provided within the cottages for all kitchen equipment where necessary. Instruction books are located in a kitchen drawer. We supply dishwasher tablets, washing machine tablets and washing up liquid. Two loo rolls are supplied for each loo.

Mobile Phone Reception

Coulscott has limited mobile phone coverage. We find that the best reception is to the front of the site towards the South.

Wood Burning Stoves

There is a wood burning stove in each of the dining room and living room. We provide the first two baskets of logs for each free. The outsides become very hot. Please do not empty them as they work best on a bed of ash. They heat best closed and with the air control turned down after they are lit. If you have any problems let us know. The ashes may also be hot for a long time and can burn or cause damage.

Keys

There are keys for the front door, kitchen door and garden room door (on one key ring), a swimming pool (on a separate key ring).

Please leave the keys on the kitchen table at the end of your stay.

Laundry

A tumble dryer and washing machine can be found in the cupboards in the games room. Please do not overload these machines. There is a clothes horse in the games room. Please try not to use the tumble dryer in good weather.

Car Parking

There are three car parking spaces for your property. Please park at the front of the house (making sure not to park in front of the next door house) and/or in the bay at the bottom of the gravel drive and to the right (making sure to pull well in).

If you have arranged with us to bring extra cars we will let you know where they can be parked.

Torch

A rechargeable torch is in the kitchen.

Refuse & Recycling

Recycling

Please help us to recycle. We aim to recycle at least 70% of our waste and to do so we have a recycling centre next to the drive leading to the cottages (see map). Please sort out your recycling and put it in the containers. We provide a box to carry the recycling to the carport. The recycling is put out on the road late on Monday for collection the next day.

In North Devon we can recycle the following:

- Metal only tins and cans
- Paper
- Cardboard
- Clear glass
- Coloured glass
- Plastic bottles (no other plastics)

Please free space by squashing plastic bottles and flattening cardboard boxes.

We CANNOT recycle:-

- Any tetrapacs i.e. fruit juice containers or other plasticised cardboard
- Plastic packaging or plastic bags

Composting

We provide compost containers in each kitchen for all vegetable matter. There is a **green bin at the entrance to Coulscott** to empty your containers into. Please put no plastic in there. This bin is emptied every two weeks and it is kept where it is because it sometimes smells.

Rubbish

Any waste that cannot be recycled please put in black bin liners provided and place in the large black bins in the recycling centre- these are collected every other Monday. Please do not overfill the bins or leave the bin bags on the floor as otherwise animals and birds will spread the rubbish over a wide area.

Leftover Food

If you have any food (whole, fresh or still in unopened packets etc.) leftover please do not throw it away. Leave it in your kitchen and we will do our best to see it goes to someone who can use it.

Grounds & Gardens

Gardens & Fields

Your private garden and terrace are located in front of the house. Please respect the private areas of other cottages. In particular please note the terrace and lawn of the Old Farmhouse next door.

There is a dog field available for guest use. Please remember that other cottages at Coulscott may have dogs in them and this field is the only area of Coulscott where they may be off the lead.

Please explore the grounds which are rich in wildlife. The separate maps show where guests may go.

Please take care of children as the ponds are unfenced and there are streams and other hazards.

Children's Play Area

The children's play area is near the cottage court yard (see maps) including swings, climbing frame, slide, trampoline, climbing tractor, pirate ship, Wendy house and football goal.

Trampoline

- No shoes or sharp objects on the trampoline
- Children under 12 must be supervised at all times
- Only one person on the trampoline at a time
- Maximum weight (18 stone)

Use the trampoline with caution.

Outdoor Games

Football, Cricket etc. can be played in, or beyond the children's play area behind the cottages.

Playroom / Games Room

The indoor playroom / games room is in the courtyard. It has a soft play area for accompanied small children with some seating for their parents. There is also a section of the room for older children's - with table tennis etc.

Children under 12 must be supervised by an adult when using the room.

The soft play area is only for under 5s.

Please take shoes off before using the soft play area.

Please be sure to leave all toys in the room and tidy up after use.

Opening hours - 09:00-20:00.

Wireless Broadband

We provide free broadband internet access to all cottages. The connection can be tenuous at times and is not guaranteed.

Please do not interfere with the equipment, which may prevent connection for everyone. We have wireless access points around each cottage to provide good coverage.

As in many rural areas our bandwidth is limited. The speed of each line is up to 8Mbps (down) and 768Kbps (up).

Usage is unrestricted, so if you need to be able to connect to your office this should work fine. We do not have any silly “landing pages”, you just connect to the wireless network and are straight on the Internet, exactly like you would be at home. Downloads are unlimited, subject to fair usage.

We do not block access to any sites, as we have often found that access to genuine web sites was being restricted. We would therefore ask that all parents bare this in mind and guide their children accordingly.

The service must not be used for any purpose that is illegal or unlawful such as those infringing copyright. In the event of such use guests will be directly responsible and we may be obliged to disclose their details to the necessary authorities or parties.

Those are the boring bits.

There should not be a password on the Wi-Fi - if this changes for any reason we will let you know.

Enjoy and let us know of any problems.

Important Information

Oil

We plan to move to more eco-friendly means of heating in the near future but for now boilers in the cottages and swimming pool are oil fired (in combination with solar panels on the pool hall). The tanks are located around the grounds. Please leave them alone and advise us immediately in the event of an emergency.

Electricity

Each cottage has its own independent electricity supply. The distribution board is located in the downstairs loo. The fuses are RCD type and can trip fairly often - for example if a light bulb blows. The RCDs can be reset by pushing the tripped switch upwards. In the event of a power failure, a torch is provided. Please do not use candles in the house.

Water

Our water supply comes from our own borehole. The water is purified, without adding chemicals, on site. Although we have never run dry we do ask guests not to waste water. The water is regularly tested by the district council, to ensure it reaches their rigorous standards.

Fire

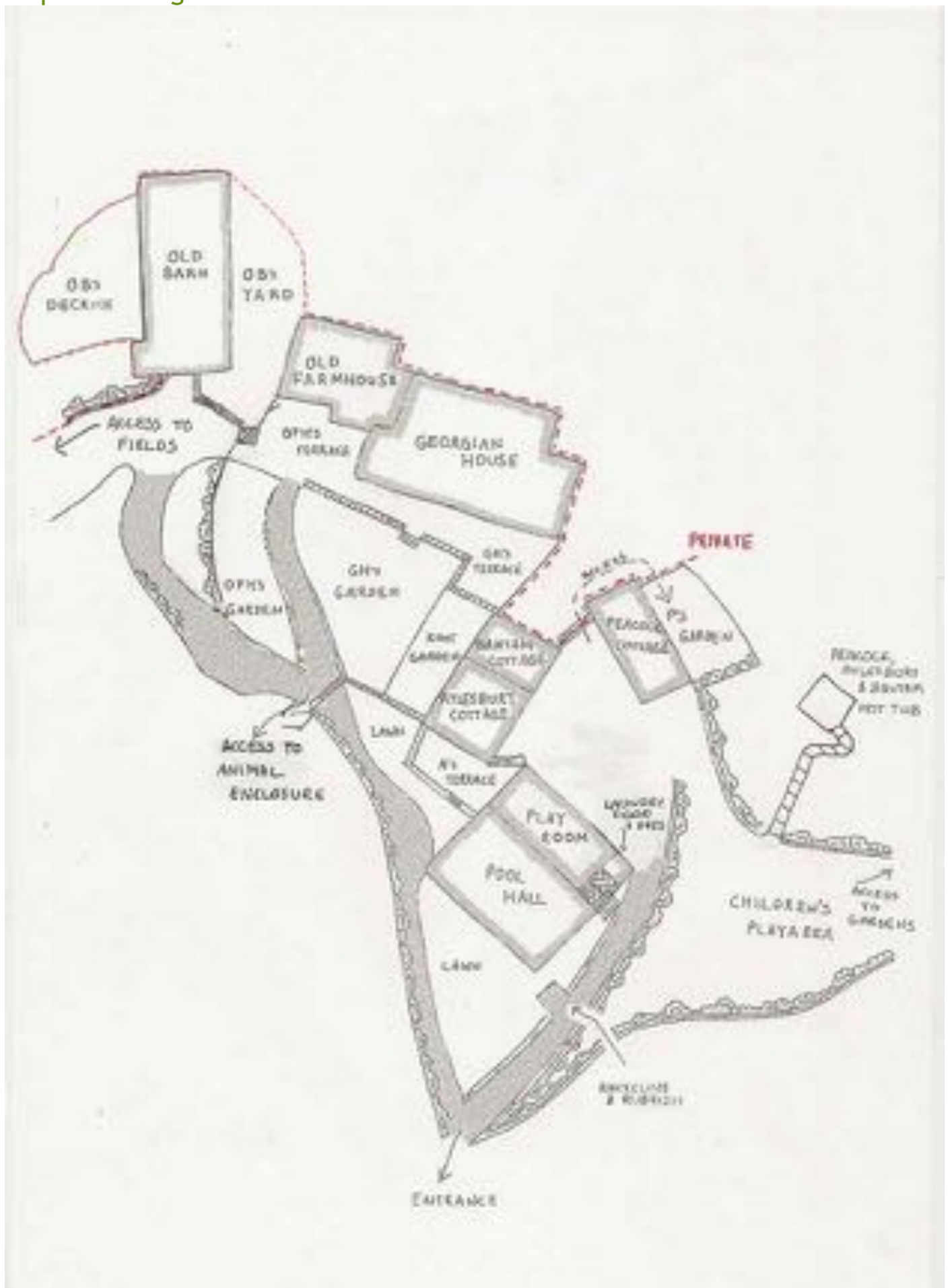
In the event of fire please evacuate your cottage. Advise us of any fire immediately, telephone the emergency services (999) and tell them you are at Coulscott House, Nutcombe Hill, Combe Martin EX34 0PQ. Fire extinguishers and fire blankets are provided in kitchens. All cottages are provided with smoke detectors. In the event of a false alarm the detectors can be switched off by pressing the reset button. Our fire alarms are fairly sensitive.

Security

We have never experienced, and do not anticipate, any problems with security. You may think it sensible however to ensure that your cottage and car are locked when unattended and at night.

You have a pool hall key. It is important for safety reasons that it is always always locked when no one is in it.

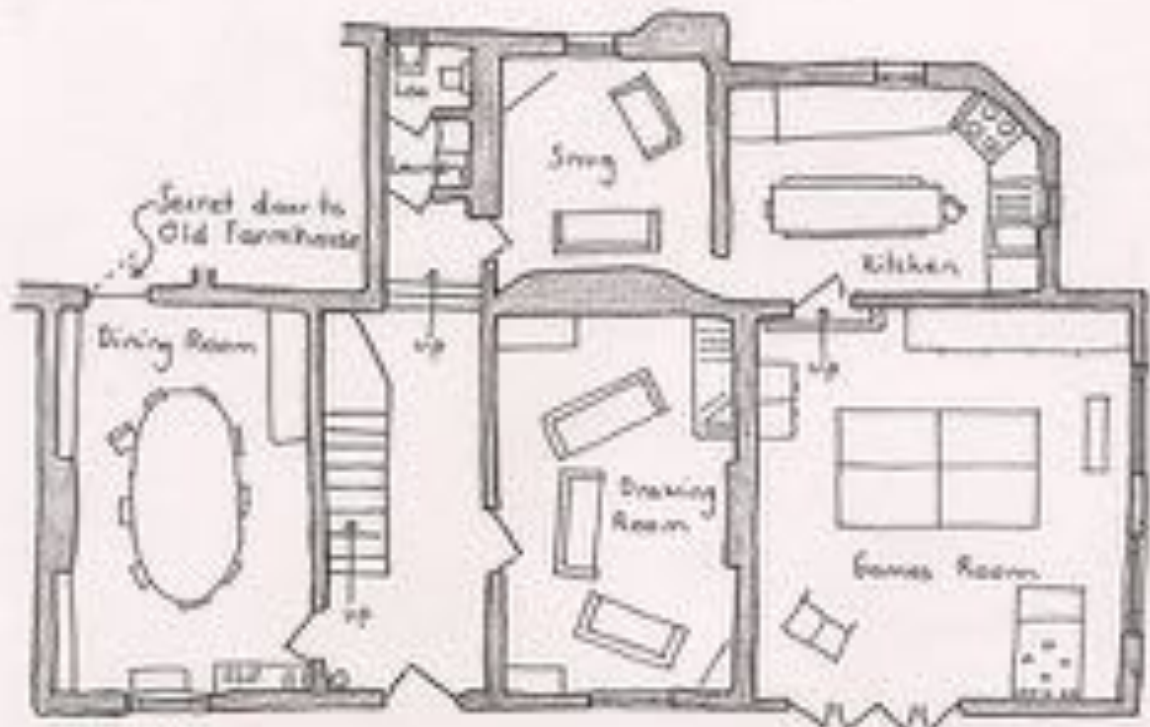
Map of Cottages



Map of Grounds



Cottage Plan



Ground Floor



First Floor

Not to Scale

Local Pubs & Restaurants

The Coach House by Michael Caines

Located in the majestically landscaped grounds of the Kentisbury Grange Hotel, and surrounded by gently rolling fields, The Coach House by Michael Caines - awarded two AA Rosettes in 2013 - is a masterpiece of contemporary rustic design and innovative yet classic cuisine. Kentisbury Kentisbury, EX31 4NL Tel: 01271 882 295 Website: www.kentisburygrange.com/restaurant-near-barnstaple/

The Fox and Goose

Set in the heart of an unspoilt Exmoor village (Parracombe). Relaxing place. Good food from fresh local produce. Local ales and extensive wine list. Parracombe, EX31 4PE Tel: 01598 763 239 Website: www.foxandgooseinnexmoor.co.uk

The Black Venus

North Devon pub of the year 2008. Many circular walks from here. Homemade food and local drinks. Well maintained beer garden. Challacombe, EX31 4TT Tel: 01598 763 251 Website: www.blackvenusinn.co.uk

The Rising Sun

Lynmouth - Ancient and picturesque building with generally excellent food. Perhaps not child friendly. Harbourside, Lynmouth, EX35 6EG Tel: 01598 753 223 Website: www.risingsunlynmouth.co.uk

The Masons Arms

Superb food in a thatched 13th century inn in a small village on the edge of Exmoor. One Michelin star. A 40-minute drive but worth it. Knowstone, South Molton, EX36 4RY Tel: 01398 341 231 Website: www.masonsarmsdevon.co.uk

Chichester Arms

Situated next to the church in the pretty village of Morteheo near Woolacombe, this 16th century pub is gas lit and once was the old vicarage! The Chichester arms offer a variety of real ales, cider, foreign beers, ample parking, beer garden and outside terrace. Specialising in fresh seafood, steaks, roast meats, and fresh vegetables all cooked to order. Morteheo, EX34 7DU Tel 01271 870 411

The Rock

This 17th Century Inn boasts five cask marque real ales, an extensive wine list and really good fresh food cooked with flair served in either the fireside bars or airy conservatory. Rock Hill, Georgeham, EX33 1JW Tel: 01271 890 322 Website: www.therockgeorgeham.co.uk

Hunters Inn

Excellent local pub at the heart of Heddon Valley. Perfect for walking the coast and Exmoor. Nice food. Large out door area. Room at the back with huge picture windows. Heddon Valley, Parracombe, North Devon, EX31 4PY Tel: 01598 763 230 Website: www.thehuntersinn.net

Esplanade Fish Bar

Award winning fish and chips. The Esplanade, Lynmouth, EX35 6EQ Tel: 01598 753 798

11 the Quay

Damien Hirst's Restaurant - Ilfracombe - Lovely building overlooking the harbour. Great views and good food - particularly the fish. Have a good look round for all the original Hirst artworks.

The top room at the back is lovely. 11 the Quay, Ilfracombe, EX34 9EQ Tel: 01271 868 090
Website: www.11thequay.co.uk

Andrew's on the Weir

Porlock Weir - Our favorite restaurant but some distance away - Fresh seasonal Exmoor produce that creates superb but unpretentious modern food. Porlock Weir, Exmoor, Somerset, TA24 8PB
Tel: 01643 863 300 Website: www.andrewsontheweir.co.uk

Quackers Restaurant

Combe Martin - Family run restaurant serves good home cooked meals. Newly and smartly converted with a lovely courtyard. Castle Street, Combe Martin, EX34 0HX Tel: 01271 882 282
Website: www.georgeanddragon.uk.com/quackers_restaurant.html

Le Bistro

Located in the picturesque village of Lynmouth. Simple cooking served from the best local produce with a friendly service and relaxed atmosphere. Le Bistro, 7 Watersmeet road, Lynmouth, EX35 6EP Tel: 01598 753 302 Website: www.lebistrolynmouth.co.uk

Top Chippy

Traditional seaside village fish and chip shop. High Street, Combe Martin, EX34 0HT Tel: 07775 441 481

Squires Fish Restaurant

Classic fish and chip shop. Exeter Road, Braunton, EX33 2JL Tel: 01271 815 533 Website: www.squiresfishrestaurant.co.uk

Ye Olde George and Dragon (Bottom George)

Combe Martin Pub - Attractive local pub, recently refurbished to a high standard - very welcoming to all. Castle Street, Combe Martin, EX34 0HX Tel: 01271 882 282 Website: www.georgeanddragon.uk.com

The Castle Inn

Combe Martin Pub - Live entertainment most Saturdays, children and dogs welcome. High Street, Combe Martin, EX34 0HS Tel: 01271 883 706 Website: www.castleinn.info

The Dolphin Inn

Combe Martin Pub - Great location overlooking the bay - Restaurant above does sea food. Seaside, Combe Martin, EX34 0AW Tel: 01271 883 424

The Fo'c'sle Inn

Combe Martin pub - Excellent bitter served here - overlooks the beach with stunning views - very popular pub. Seaside, Combe Martin, EX34 0DJ Tel: 01271 883 354 Website: www.focsleinn.co.uk

Pack O' Cards Pub

Combe Martin pub - The Pack o' Cards Inn is a unique Grade II Ancient Monument. Constructed to resemble a deck of cards, apparently financed from a gambling win. They have a fine selection of real ales and lagers and you can enjoy meals in the restaurant or the riverside garden. There is a large playground for the children and in the summer they have barbeques in the garden. High Street, Combe Martin, EX34 0ET Tel: 01271 882 300 Website: www.packocards.co.uk

The Royal Marine Pub

Combe Martin pub - lovely view of cliffs and bay - welcoming bar and comfortable dining area.
Seaside, Combe Martin, EX34 0AW Tel: 01271 882 470 Website: www.theroyalmarine.co.uk

Local Shops

Besshill - (Farmshop) - 10 minutes from Coulscott - Sells stunning meats reared on their own farm, as well as locally produced seasonal vegetables, fruit, salad, preserves, milk, cream & Cheese. Will make local deliveries. Open Monday to Saturday: 9.30am - 5pm
Seasonal Sundays: 10am - 4pm. Free delivery available. Besshill, Arlington, Barnstaple, EX31 4SW. Tel: 01271 444 440.

Nisa Convenience Store - King Street, Combe Martin, EX34 0AD Tel: 01271 882124

The Village Bakery - (near the sea) King Street, Combe Martin, EX34 0AL Tel: 01271 883 392

Sue's of Combe Martin (Spar) - Newsagent and supermarket (near the sea) Sunnycroft, Cross Street, Combe Martin, EX34 0DD Tel: 01271 882 214

Garage - Petrol station and convenience store - 1 mile from Coulscott (turn right out of Coulscott's drive and keep going in to the village) at the top end of Combe Martin

Tesco - New Barnstaple Road, Killicleave Farm, Ilfracombe, EX34 8PQ - open 8am-10pm
Monday-Saturday, 10am-4pm Sunday / Rose Ln, Barnstaple, Devon EX32 8PG open 24 hours
Monday - Saturday, 10am-4pm Sunday / Unit 6-7, Seven Brethren Bank, Barnstaple, EX31 2AS
open 24 hours Monday - Saturday, 10am-4pm Sunday

Sainsbury's - Gratton Way, Roundswell Business Park, Barnstaple, EX31 3NH - open 7am-11pm
Monday-Friday, 7am-10pm Saturday, 10am-4pm Sunday

Post Office – Nisa Convenience Store. King Street, Combe Martin, EX34 0AD Tel: 01271 882124

Pets Pantry - (Pet Shop) Treevale, High Street Combe Martin, EX34 0ET Tel: 01271 882 807

Boots - (Pharmacy) Borough Road, Combe Martin, EX34 0ET Tel: 01271 883 357

Surfside - (Kayak Hire, Surf clothing and gift shop) Borough Road, Combe Martin, EX34 0DQ
Tel: 01271 883 220

West Country Fayre - (Gift Shop) Borough Road, Combe Martin, EX34 0AN Tel: 01271 889 334

Richards Television - (Electrical Shop) King Street, Combe Martin, EX34 0AG Tel: 01271 882 633

Local Services

Andy's Cabs

Local Taxi firm. Tel: 01271 889 200

Pawfully Happy

Dog day care. Tel: 01271 882 847 / 07791 167 795 / 07813 013 462

Gilly's Helping Hands Childcare Services

Professional childcare services Tel: 01271 376 674 / 07527 346 279

Rebecca Nash Catering

Superb catering - used by us for our parties Tel: 07958 682 299 / 01884 250 333

Hibiscus Catering

"Stylish and tasty cuisine for every occasion" Tel: 07891 587 218

Goodenough Plants

Good local florist Tel: 01271 879 749

Hanson's Garage

Castle Street, Combe Martin, EX34 0JF Tel: 01271 883 555 / 07850 112 233 / 07834 043 251

Loverings Garage

Borough Road, Combe Martin, EX34 0AN Tel: 01271 883 257

Argyl Veterinary Practice

24 Highfield Road, Ilfracombe, Devon, EX34 9LZ Tel: 01271 867711

Consulting Times: 9am - 11am and 3pm - 6pm, extended as necessary

Please see our website (www.coulscott.co.uk) for other local services

Local Attractions

Combe Martin Wildlife & Dinosaur Park - A collection of animals “from present day, to the world of 225 million years ago!” Set in 25 acres - just across the valley from Coulescott. Higher Leigh Manor Hotel, Combe Martin, EX34 0NG Tel: 01271 882 486 Website: www.devonthemepark.co.uk

The Big Sheep - Working farm turned adventure park with shop and restaurant. Abbotsham Road, Abbotsham, Devon, EX39 5AP Tel: 01237 472 366 Website: www.thebigsheep.co.uk

Milky Way Adventure Park - Attractions for all ages whatever the weather. Downland Farm, Higher Clovelly, Bideford, EX39 5RY Tel: 01237 431 255 Website: www.themilkyway.co.uk

Hartland Abbey - Abbey with woodland gardens, secret 18th Century walled gardens and the Baronets Bog Garden. Hartland, Bideford, EX39 6DT Tel: 01237 441 264 Website: www.hartlandabbey.com

South West Shooting School - Clay Pigeon Shoots & Rifle Ranges. Ettiford Farm, Nr Ilfracombe, EX34 9RG Tel: 01271 864 784 Website: www.southwestshooting.co.uk

Combe Martin Museum - History of Combe Martin. Cross Street, Combe Martin, EX34 0DH Tel: 01271 889 031 Website: www.combe-martin-museum.co.uk

Lynton and Barnstaple Railway - Famous and picturesque narrow gauge railway. Woody Bay Station, Barnstaple, EX31 4RA Tel: 01598 763 487 Website: www.lynton-rail.co.uk

Theatres - Landmark Theatre (Promenade, Ilfracombe, Devon, EX34 9BZ). Queens Theatre (Boutport St, Barnstaple, EX31 1SY). Barnstaple Box Office Tel: 01271 324 242 Website: www.northdevontheatres.org.uk

RHS Garden Rosemoor - A National Garden: 40 acres with arboretum, formal planting, potager and many varieties of Rose. Visitor centre, shop, restaurant & plant centre. A3124, Great Torrington, EX38 8PH Tel: 01805 626 815 Website: www.rhs.org.uk/gardens/rosemoor

Dartington Crystal - Working factory. Watch glass blown, shaped & engraved and have a go at glass decoration yourself. Factory shop, visitor centre & restaurant. Dartington Crystal, Linden Close, Torrington, EX38 7AN Tel: 01805 626 242 Website: www.dartington.co.uk/visit-us

Arlington Court - National Trust property with fine collections. Lovely gardens and grounds to wander through Licensed restaurant and shop. Arlington, Barnstaple, EX31 4LP Tel: 01271 850 296 Website: www.nationaltrust.org.uk/main/w-arlingtoncourt

Broomhill Sculpture Gardens - International Contemporary Art Gallery, with 10 acres full of sculptures situated in a beautiful valley. Muddiford, Barnstaple, EX31 4EX Tel: 01271 850 262 Website: www.broomhillart.co.uk

Mullacott Quads - Mullacott Equestrian Centre, Honeycleave Farm, Ilfracombe, EX34 8NA. Tel: 01271 866 685 Website: www.mullacott.co.uk

Exmoor Zoological Park - Organised keeper talks, orientated around animal feed times. Great selection of animals. South Stowford, Bratton Fleming, Barnstaple, EX31 4SG Tel: 01598 763 352

Website: www.exmoorzoo.co.uk

Watermouth Castle and Theme Park - The Castle, Edwardian history. Dungeon labyrinth. Courtyard - Magical Multi-Coloured Fountain Show Merrygoland, rides and games. Gnome land - speaks for its self. An all inclusive price covers every thing except coin operated machines, shops and restaurant. Berrynarbor, Ilfracombe, EX34 9SL Tel: 01271 863 879 Website: www.watermouthcastle.com

Ilfracombe Princess - Regular sailings from Ilfracombe Harbour - Timetable and tickets from Combe Martin TIC or Ilfracombe Princess. Tel: 01271 879 727 Website: www.ilfracombeprincess.co.uk

Silverdale Nurseries - Combe Martin - National hardy fuchsia collection. Shute Lane, Combe Martin, EX34 0HT Tel: 01271 882 539

Dean Riding Stables - An approved yard, within the Exmoor National Park. With quality well mannered horses and ponies. Offer escorted hacking and instruction for all ages and levels. Lower Dean Farm, Dean, Parracombe, EX31 4PJ Tel: 01598 763 565 Website: www.deanridingstables.co.uk

Marwood Hill Gardens - Garden, Plant Sales and Garden Tearoom. Marwood, Barnstaple, EX31 4EB Tel: 01271 342 528 Website: www.marwoodhillgarden.co.uk

Clovelly - Cobbled, traffic-free private fishing village. Clovelly Visitor Centre, Near Bideford, EX39 5TA Tel: 01237 431 781 Website: www.clovelly.co.uk

Quince Honey Farm - Quince includes hives that open to reveal their inner workings safely behind glass. With shop and refreshments. North Road, South Molton, EX36 3AZ Tel: 01769 572 401 Website: www.quincehoney.co.uk

Chambercombe Manor - Lovely property steeped in history and legend - reputed to be haunted. Chambercombe Lane, Ilfracombe, EX34 9RJ Tel: 01271 862 624 Website: www.chambercombemanor.org.uk

Larkstone Café and Leisure Park - Where the whole family can spend a day playing lawn games such as Bowls, Croquet, Tennis and Putting, or 9 holes of Golf on the adjacent Pitch and Putt course with its views of the Harbour and Seafront, and enjoy a spot of lunch or a cream tea. Tel: 01271 269 240 Website: www.larkstonecafe.co.uk

Leaflets giving information on the area are in the houses. There is also a tourist information centre in the village near the beach. Cross Street, Combe Martin EX34 0DH Tel: 01271 883 319

Places of Worship

St Peter's Ad Vincua (C of E)
Off Castle Street, Combe Martin

Baptist Church
High Street, Combe Martin

Methodist Church
Castle Street, Combe Martin

Orthodox Church
Shute Lane, Combe Martin

Our Lady Star Of The Sea R C Church
Runnacleave Road, Ilfracombe

The Aetherius Society
Holdstone Down

Emergency & Medical Services

Doctors

Waterside Practice - Located in the village on the corner of Castle Street and Victoria Street - At Coulescott's entrance turn right down the hill, continue in to the village turning right on to the main village high street. The Health Centre is on the left part way down the village. EX34 0JA Tel: 01271 882406. Out of Hours Tel: 01271 824 600.

Warwick or Waterside Practices. Ilfracombe Medical Center, St Brannocks Road, Ilfracombe EX34 8EG Tel:01271 863119/01271 863 840

Dentists

We do not know which will offer an emergency service. We have listed the closest surgeries and their details.

Torrs Park Dental Practice, Torrs Park, Ilfracombe EX34 8AY Tel: 01271 863 331

Marlborough Dental Care, 4 Marlborough Road, Ilfracombe, EX34 8JJ Tel: 01271 862 556

Nigel Honeys Dental Practice. 32 Pilton Street, Barnstaple, EX31 1PJ Tel: 01271 268 288

Emergency Dental Service Barnstaple, Barnstaple Health Centre, Vicarage Street, Barnstaple, EX32 7BT Tel: 01271 324 878

Accident & Emergency

North Devon District Hospital - Has A&E. Raleigh Park, Barnstaple, EX31 4JB Tel: 01271 322 577

Ilfracombe NHS Trust - No A&E. St Brannocks Park Road, Ilfracombe, EX34 8JF Tel: 01271 863 448

Pharmacy

Boots Pharmacy. Cornwall House, Borough Road, Combe Martin, EX34 0AN Tel: 01271 883 357

Superdrug. 25 High Street, Ilfracombe, EX34 9DA Tel: 01271 862 122

Lloyds Pharmacy. 21 High Street, Ilfracombe, EX34 9DA Tel: 01271 862 058

NHS non-emergency number: 111. NHS 111 is available 24 hours a day, 365 days a year. Calls are free from landlines and mobile phones.

Police non-emergency number: 101. You should call 101 to report crime and other concerns that do not require an emergency response.

Emergency telephone number: 999. For medical emergencies, fire and situations requiring an emergency response from the police.

Fire Safety Emergency Plan

The house is fitted with smoke detectors.

In the case of fire leave the house quickly, leaving all possessions behind. Ensure that anyone who has reduced mobility is helped and that all children and babies are removed from the house.

The two exits are the front door and the kitchen door. Please use whichever of these is the safest at the time. In an extreme emergency ground floor windows may be used or the first floor back bedroom windows, which are the lowest first floor windows in the building as it is cut back into the hillside.

Please keep the key in the door at night so it can be opened.

Please phone 999 when everyone is safe and then contact us on 01271883339.

To minimize the risk of fire we have a few house rules. The most important are NO SMOKING and NO CANDLES in the house.

Please use the wood burning stoves properly; the stove doors should be closed at all times whilst in use, except for adding more wood and the fire guard should be in place at all times. Please keep the matches and firelighters away from children and wood by keeping them on a non-flammable surface high above the stove.

It is good practice to close all doors downstairs at night. In this house the most important are the kitchen and drawing room.

In the kitchen please never leave oil unattended on the hob.

Please do not let flammable rubbish build up in the houses, as this is not safe.

Please ensure that any celebratory decorations you may bring are safe and are used safely.

If there are any worries about electrical items being unsafe or indeed anything being of a concern please report it to us as soon as you can.